



天津市鼎安达  
Tianjin DingAnDa

# 天津市鼎安达玻璃有限公司 玻璃耗材与配件部

有玻璃的地方 就有鼎安达  
Where there is glass, There is Dinganda



## 玻璃耗材配件“一站式”采购平台

"One-stop" procurement platform for glass consumable parts

### 买贵了, 补差价! 质量问题, 无条件全额退款!

Buy expensive, make up the difference! Quality problem, a full refund unconditionally.



鼎安达玻璃  
DingAnDa Glass

天津鼎安达玻璃有限公司  
Tianjin DingAnDa Glass.,Ltd

天津总公司: 天津市北辰区韩家墅钢材市场C区后道41号

# COMPANY PROFILE

# 目录 CONTENTS

Tianjin Dinganda Glass Co., Ltd, established in 1997, locates in the logistics center city Tianjin of North China. After 20 years of development, it becomes a leading company in the national glass industry and glass resources in China.

Based in Tianjin, taking Shahe, the base of China's glass industry, as a large-scale glass and glass accessories consumables warehouse, radiate across the country; through Qingdao, Tianjin, and Guangdong coastal ports to open up overseas sales channels. After several years development, the company owns Tianjin Rishengyuan Glass Technology Co, Ltd, Hengshengyuan Building Fire Protection Technology Co., Ltd., Qingdao Dinganda Glass Technology Co., Ltd., Shahe Dinganda Glass Branch, Tianjin Dinganda Guangdong Branch, and Shanxi Dinganda Glass Branch; with seven major business sectors including glass trading, glass machinery and exporting etc, and becomes a leading firm in China. We continuously work hard and looking forward to work with you in the very near future.

## Tianjin Dinganda Glass Consumables & Accessories Department

Quality assurance, Customer first, Working toward to brilliant future

The Consumables & Accessories Department of Tianjin Dinganda Glass Co., Ltd. discloses honest product prices to customers around the world and achieving:

Product diversification & quality optimization & price margin minimization.

We promise ensuring high quality and with most competitive market price.

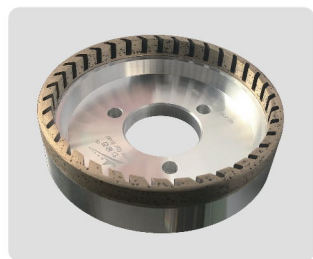
1	Double/Straight Edge Machine Series	01
2	Shaped Machine Series	04
3	Beveling Machine Series	05
4	Four Side Grinding Series	06
5	Drilling Machine Series	07
6	Tempered & Laminated	08
7	CNC Machining Center	09
8	Hollow Plate	10
9	Cutting Series	12
10	Grinding & Polishing	14
11	Labor Safety Protection Products	15
12	Simple Machinery	17
13	Manual Suction Cup Lifter Series	22
14	Accessories Series	23



High speed diamond wheel  
F6  
175\*d\*15\*10 80#、100#  
175\*d\*15\*6 80-180#  
175\*d\*12\*6 140#、180#



Full segment diamond wheel  
F4、F5、F6  
150\*d\*15\*10 40#-100#  
175\*d\*15\*8 40#-100#  
175\*d\*15\*10 40#-100#



Inner segment diamond  
F4、F5  
150\*d\*8\*10 140#、180#  
175\*d\*8\*10 140#、180#



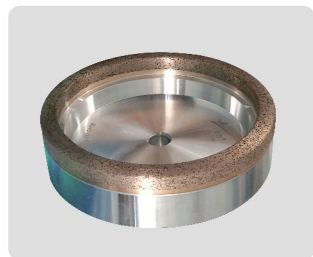
Outer segment straight edge  
diamond wheel  
F5、F6  
150\*d\*12\*10 100#-240#  
150\*d\*12\*5 100#-240#  
175\*d\*12\*8 120#、180#、240#



Continuous diamond wheel  
F3、F4、F5、F6  
150\*d\*8\*8 80#-240#  
150\*d\*8\*10 80#-240#  
175\*d\*8\*8 80#-240#



Outer segment diamond wheel  
F3、F6  
130\*d\*12\*8 180#-320#  
F6  
150\*d\*12\*5 180#-320#



Continuous diamond wheel  
F3、F6  
130\*d\*8\*8 240#、270#、320#  
F3  
130\*d\*10\*8 240#、270#、320#  
150\*d\*10\*8 240#、270#、320#



Shaped beveling diamond wheel  
F5  
150\*22\*8\*10 100#



Inner & Outer segment  
diamond wheel  
F6  
175\*12\*6



Full segment diamond wheel(XY)  
175\*15\*10  
150\*15\*10  
150\*10\*10  
(12、22、50) (100#)



Inner segment diamond wheel(XY)  
175\*10\*8  
150\*10\*8  
(12、22、50) (140#)



Continuous diamond wheel(XY)  
175\*10\*10 180# 175\*8\*8 100#  
130\*8\*8 100# 150\*8\*8 100#、180#  
(12、22、50)



Full segment diamond wheel(E3)  
Φ150\*15\*12  
Φ175\*15\*12  
(12、22、50) (80#、100#)



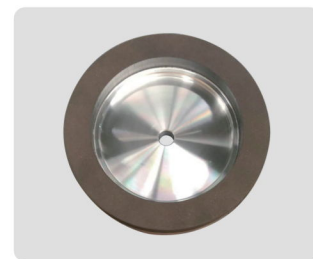
Inner segment diamond wheel(E3)  
Φ150\*9\*12  
Φ175\*9\*12  
(12、22、50) (140#)



Continuous diamond wheel(E3)  
Φ150\*8\*8  
Φ130\*8\*8  
(12、22、50) (100#、240#)



Continuous diamond wheel(E2)  
Φ150\*8\*8  
Φ130\*8\*8  
(12、22、50)  
(100#、120#、180#、240#)



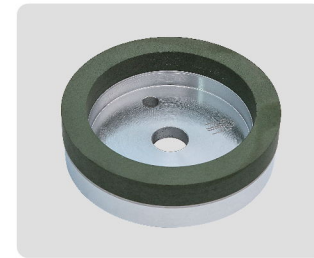
Resin wheel(Good)



Resin wheel(Standard)



Resin wheel



Resin wheel



Resin wheel(BJ)



Continuous resin wheel



Full segment resin wheel  
Φ175\*20\*15 (12、240#)  
Φ150\*20\*15 (12、240#)



10S Polishing wheel(standard)  
Φ150\*40\*70  
10S40、10S60、10S80  
Φ130\*35\*60  
10S40、10S60



10S Polishing wheel(BJ)  
Φ150\*70\*40 10S80  
Φ130\*60\*35 10S40  
Φ150\*70\*40 10S40  
Φ150\*70\*40 10S60  
Φ130\*60\*35 10S60



10S-II Polishing wheel(Middle)  
Φ150\*40\*70  
10S40、10S60、10S80  
Φ130\*35\*60  
10S40、10S60



10S TX Polishing wheel(best)  
Φ150\*40\*12  
10S40、10S60、10S80  
Φ130\*35\*60  
10S40、10S60



10S Polishing wheel(with base)  
Φ150\*40\*12  
Φ130\*35\*12



BK Polishing wheel  
Φ150\*40\*70  
40#、60#  
Φ130\*35\*60  
46#、60#



Polishing wheel(CE3)  
Φ150\*40\*70

Resin wheel

- Φ175\*15\*10 High quality (12 240#)
- Φ175\*15\*12 Normal (12 240#)
- Φ150\*15\*20 (12 22 50) (240#)
- Φ150\*15\*15 (12 22 50) (230# 320#)
- Φ150\*15\*12 (12 22 50) (240#)
- Φ150\*15\*10 (12 50) 240#
- Φ150\*10\*12 (12 50) 240#
- Φ150\*10\*10 (12 50) 240#
- Φ130\*15\*15 (12 22 50) (230#)
- Φ130\*15\*12 (12 22 50) (240#)
- Φ130\*15\*10 (12 50) (240#)
- Φ130\*10\*12 (12 50) (240#)
- Φ130\*10\*10 (12 50) (240#)

Resin wheel(BJ)

- Φ175\*20\*15 (12 240#)
- Φ150\*20\*15 (12 240#)
- Φ130\*20\*15 (12 240#)

Continuous resin wheel

- Φ150\*20\*13 (12 22) (240#)



Polishing Wheel CELT-3(best)  
Φ150\*40\*70  
Φ130\*35\*60



Polishing Wheel X3000(normal)  
Φ150\*30\*70



Polishing Wheel X3000( best)  
Φ150\*30\*70



Polishing Wheel X5000 (normal)  
Φ150\*40\*70



Polishing Wheel X5000  
( with base)  
Φ150\*40\*70



Polishing Wheel X5000 (best)  
Φ150\*40\*70  
Φ150\*30\*70



Polishing Wheel DAD-01  
Φ150\*30\*70



Stone Wheel  
150\*12\*40  
130\*12\*40



Water-type Coating  
Remove Wheel



Water-type Coating  
Remove Wheel(bronze)



Water-type Coating  
Remove Wheel(grey)



Water-type Coating  
Remove Wheel



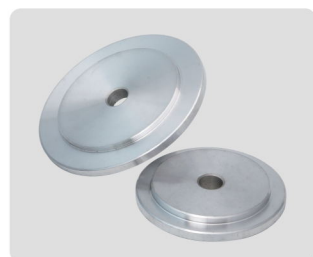
Brush  
1000mm/roll



Aluminum Base  
Φ100\*30\*40



Aluminum plate  
Φ130\*12  
Φ150\*12



Cover  
Taxus Wheel Cover (for 130 dia)  
Taxus Wheel Cover (for 150 dia)

**Water-type Coating  
Remove Wheel**  
Φ130\*40(孔)\*12mm  
**Bronze colour suitable for  
the double edge machine**  
Φ150\*50(孔)\*10mm  
Φ150\*50(孔)\*12mm  
Φ150\*50(孔)\*15mm  
Φ150\*50(孔)\*18mm  
Φ150\*50(孔)\*20mm  
Φ150\*76(孔)\*10mm  
Φ150\*76(孔)\*12mm  
Φ150\*76(孔)\*15mm  
Φ200\*76.2(孔)\*10mm  
Φ200\*76.2(孔)\*12mm  
Φ200\*76.2(孔)\*15mm  
Φ200\*76.2(孔)\*18mm

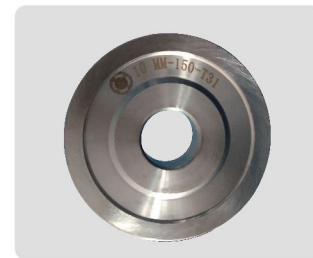
**Grey color suitable for four  
sideedger machine**  
Φ200\*76.2(孔)\*10mm  
Φ200\*76.2(孔)\*12mm  
Φ200\*76.2(孔)\*15mm  
Φ200\*76.2(孔)\*18mm  
Φ200\*76.2(孔)\*20mm  
**Water-type coating  
removing wheel**  
Φ150\*20\*15  
Φ150\*20\*10  
Φ150\*20\*12



Round Edge Diamond Wheel



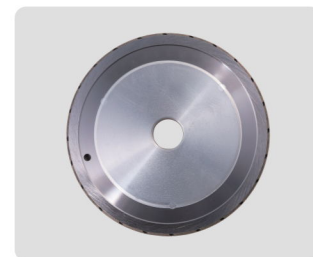
Round Edge Diamond Wheel



Pencil Edge Diamond Wheel

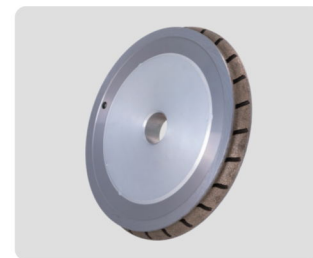


Pencil Edge Diamond Wheel



Ogee Wheel

Φ100\*22\*8  
80# 150# 240#  
Φ100\*22\*10  
80# 150# 240#  
Φ100\*22\*12  
80# 150# 240#  
Φ150\*22\*8  
80# 150# 240#  
Φ150\*22\*10  
80# 150# 240#  
Φ150\*22\*12  
80# 150# 240#



Ogee Wheel



BD Polishing Wheel



BD Polishing Wheel



BK Polishing Wheel



BK Polishing Wheel

Φ100\*22\*3mm 180# 200#  
Φ100\*22\*4mm 180# 200#  
Φ100\*22\*5mm 150# 180#  
Φ100\*22\*6mm 150# 180#  
Φ100\*22\*8mm 80# 150# 240#  
Φ100\*22\*10mm 80# 150# 240#  
Φ100\*22\*12mm 80# 150# 240#  
Φ100\*22\*15mm 80# 150# 240#  
Φ100\*22\*19mm 80# 150# 240#  
Φ150\*22\*3mm 180# 200#  
Φ150\*22\*4mm 180# 200#  
Φ150\*22\*5mm 150# 180#  
Φ150\*22\*6mm 150# 180#  
Φ150\*22\*8mm 80# 150# 240#  
Φ150\*22\*10mm 80# 150# 240#  
Φ150\*22\*12mm 80# 150# 240#  
Φ150\*22\*15mm 80# 150# 240#  
Φ150\*22\*19mm 80# 150# 240#



Beveling Wheel

**Beveling Wheel**

Φ150\*22\*10mm  
80# 150# 240#  
Φ150\*22\*15mm  
80# 150# 240#  
Φ150\*22\*19mm  
80# 150# 240#



Tricolor Wheel

**Tricolor Wheel**  
Φ150\*36\*22\*15\*10  
Red:320#  
Green:180#  
Black:80#

**BD Polishing Wheel**  
Φ100\*22\*15mm 5厘 6厘用  
Φ100\*22\*20mm 8厘 10厘用  
Φ100\*22\*25mm 12厘 15厘用  
Φ100\*22\*30mm 19厘用  
Φ150\*22\*15mm 5厘 6厘用  
Φ150\*22\*20mm 8厘 10厘用  
Φ150\*22\*25mm 12厘 15厘用  
Φ150\*22\*30mm 19厘用

**BK Polishing Wheel**

Φ150\*22\*15mm 60# 120# 180#  
Φ150\*22\*20mm 60# 120# 180#  
Φ150\*22\*25mm 60# 120# 180#  
Φ150\*22\*30mm 60# 120# 180#

Double/straight edge  
machine

Special Machine  
series



Silicone sucker  
Diameter 90 Hole 25



Vacuum generator



Track wheel



Shaped machine rubber sucker



External segment beveling diamond wheel  
Seven star stone F3  $\phi 150 \times 6 \times 12$   
F4  $\phi 150 \times 6 \times 12$  F4  $\phi 150 \times 8 \times 10$   
Aperture:22 Granularity:100#



Continuous beveling diamond wheel  
Seven star stone F4  $\phi 150 \times 5 \times 12$   
Aperture:22 Granularity:80#/180#



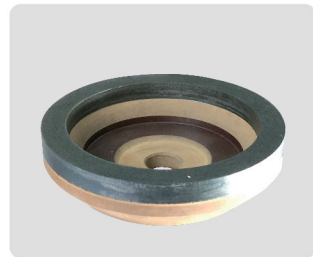
External segment beveling diamond wheel  
XY F4  $\phi 150 \times 8 \times 10$   
Aperture:22 Granularity:100#



Continuous beveling diamond wheel  
XY F4  $\phi 150 \times 5 \times 10$   
Aperture:22 Granularity:180#



Beveling machine resin wheel  
 $150 \times 22$ (aperture) $\times 15 \times 12$   
3#, 4#, 5#, 6#, 7#



Beveling machine resin wheel  
 $150 \times 22$ (aperture) $\times 15 \times 13$   
3#, 4#, 5#, 6#, 7#



Beveling machine resin wheel  
 $150 \times 12 \times 20 \times 15$   
3#, 4#, 5#, 6#, 7#



Woolen wheel  
 $\phi 150 \times 35 \times 70$   
 $\phi 150 \times 35 \times 105$



Woolen wheel with powder  
 $\phi 150 \times 35 \times 70$   
 $\phi 150 \times 35 \times 105$



Oxide cerium polishing powder  
Pink 5kgs/bag  
White 5kgs/bag



GGs diamond+resin wheel  
 $\phi 160 \times 38 \times 68$  320#  
X02 edging machine available



GGs diamond+resin wheel  
 $\phi 160 \times 38 \times 22$  320#



GGs diamond+resin wheel  
 $\phi 160 \times 20 \times 22$  200#



GGs diamond+resin wheel  
 $\phi 160 \times 32 \times 10.5 \times 10$



GGs diamond+resin wheel  
 $160 \times 40 \times 68 \times 10$



GGs diamond+resin wheel  
 $160 \times 68 \times P20$  320#



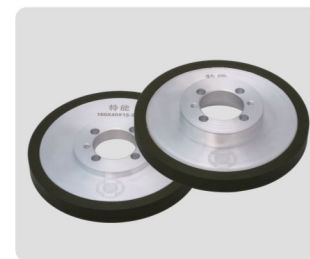
Four sides edger machine resin wheel  
 $160 \times 22 \times 33$



Kaiye four sides edger machine resin wheel  
 $\phi 160 \times 35 \times 22$



Teneng four sides edger machine resin wheel  
 $\phi 160 \times 6 \times 40 \times 38$



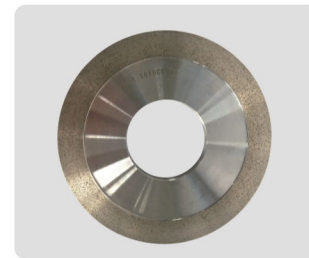
Teneng four sides edger machine resin wheel  
 $160 \times 40 \times 15$ (2pcs/set)



Hengjiu four sides edger machine resin wheel  
 $160 \times 75$ (aperture) $\times 38$ (thickness)



Yihai four sides edger machine chamfering diamond wheel XY  
 $150 \times 10 \times P22$  320#



Yihai four sides edger machine bottom grinding diamond wheel  
 $200 \times 76.2 \times 22.5 \times 5$  140#



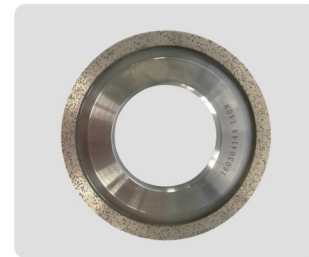
Golive four sides edger machine upper chamfer diamond wheel XY  
 $160 \times 10 \times 20 \times P10$ (2pcs/set) 320# 240#  
For A type and B type machine



Golive four sides edger machine chamfering diamond wheel XY  
 $160 \times 10 \times 20 \times P10$ (2pcs/set) 240# 320# For A type machine



Golive four sides edger machine bottom grinding diamond wheel  
 $150 \times 10.5 \times 10 \times 5$  140#  
For A type machine



Golive four sides edger machine bottom grinding diamond wheel  
 $150 \times 76.2 \times 10 \times 5$  140#  
For B type machine



Golive four sides edger machine chamfering diamond wheel XY  
 $160 \times 10 \times 20 \times P10$ (2pcs/set) 320#240# For C type machine



Golive four sides edger machine bottom grinding diamond wheel XY  
 $160 \times 10 \times 68 \times 3P10$  120# 150# 180#  
For C type machine



Sintered taper-shank drill  
 $\phi 5 - \phi 11 / \text{mm}$   $\phi 12 - \phi 100 / \text{mm}$   
 $\phi 110 - \phi 120 / \text{mm}$



Sintered taper-shank drill (ultra thin)  
 $\phi 5 - \phi 11 / \text{mm}$   $\phi 12 - \phi 75 / \text{mm}$   
 $\phi 80 - \phi 100 / \text{mm}$



Sintered taper-shank drill (new type)  
 $\phi 5 - \phi 11 / \text{mm}$   $\phi 12 - \phi 75 / \text{mm}$   
 $\phi 80 - \phi 100 / \text{mm}$



Overall drill bits  
 $\phi 6 - \phi 11$   $\phi 12 - \phi 75 / \text{mm}$   
 $\phi 80 - \phi 100 / \text{mm}$



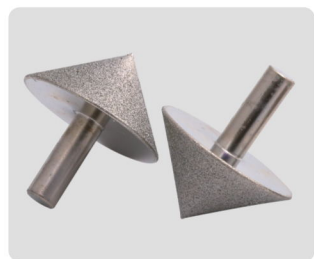
Electroplated hand drill bits  
 $\phi 5 - \phi 90 / \text{mm}$   
 $\phi 100 - \phi 120 / \text{mm}$



Chamferer  
 $\phi 5 - \phi 11$   $\phi 12 - \phi 70 / \text{mm}$   
 $\phi 80 - \phi 100 / \text{mm}$



Chamfering ring  
 $\phi 5 - \phi 11$   $\phi 12 - \phi 75 / \text{mm}$   
 $\phi 80 - \phi 100 / \text{mm}$



Electroplating Grinding Head  
Φ20mm-Φ70mm



Sintered Straight Shank Grinding Head  
Φ20mm-Φ80mm



Sintered Straight Shank Grinding Head(Excavation of water holes)  
Φ20mm-Φ80mm



White Steel Jade Gravel  
Φ200\*120#



Connector  
L45 L65 L75



Cooper Water Connector  
Yihai M19



Cooper Water Connector  
Linshi style M16



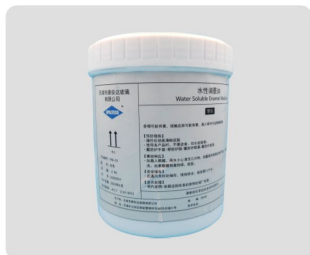
Tempered Lamp



Imported Tempered Lamp



Water Soluble Tempered High Temperature Ink - White  
2kg /bucket



Water Soluble Tempered High Temperature Ink - Black  
2kg /bucket



Thinner  
1kg/bucket, only suitable for our company's water soluble tempered high temperature ink



Low Temperature Ink  
Includes 0.5kg hardener + thinner +1kg white ink 1kg/ bucket



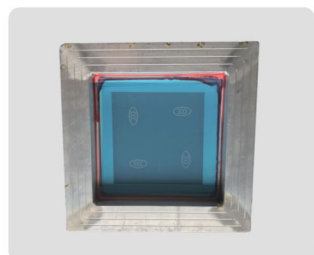
Low Temperature Ink  
Includes 0.5kg hardener + thinner +1kg black ink 1kg/ bucket



Quick dry ink for glass and metal  
1 kg/bottle black



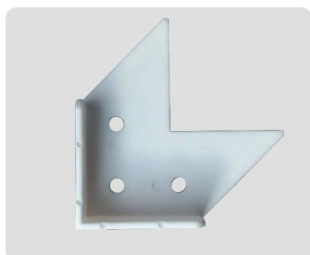
Quick dry ink for glass and metal  
1 kg/bottle white



CCC Printing Plate  
20\*20



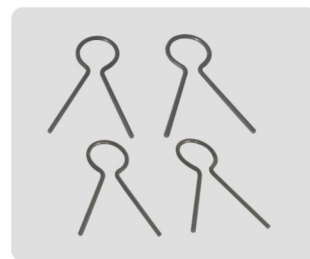
Printing Plate Scraper  
5CM



Localizer



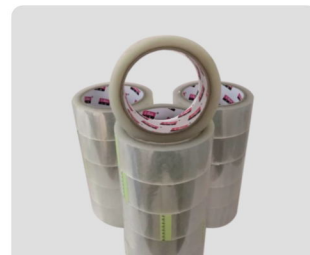
Glass Repair Fluid  
S-2-30 laminated glass glass repair fluid 250ml\*1



Wet Laminated Clip  
suitable for 5+5+6



Hard Edge Strip  
1.52mm thickness  
1.98kg/roll \* 60cm width



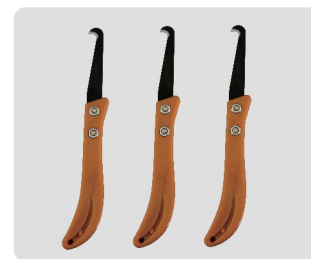
Wet Clamping Tape (Hard)



Wet Clamping Tape (Soft)



Diamond Wheel  
(Rounded Edge / Straight Edge)



Stitching knife  
Clean up the residual glue of laminated glass



Soft Edge Strip  
1.52mm thickness  
1.98kg/roll \* 60cm width



**Wet Clamping Tape (Hard):**  
3cm 84rolls/box, for 5+5 glass 50m/roll  
3.8cm 60rolls/box, for 5+5, 6+6 glass, 50m/roll  
5cm 48rolls/box, for 8+8, 10+10 glass, 50m/roll  
7cm 33rolls/box, for 12+12 or glass with punched holes, 50m/roll

**Wet Clamping Tape (Soft):**  
3cm 35rolls/box, for 5+5 glass, 150m/roll  
3.8cm 30rolls/box, for 5+5, 6+6 glass, 150m/roll



Wet Glue (004 Basic Type)  
Buy 10 get one free



Wet Glue (863 Resin Type)  
Buy 10 get one free



Imported Aramid High Temperature Rope



Tempering Furnace Round Belt



Wet Glue (919 Resin Type)  
Buy 10 get one free



Wet Glue (Golden shield)  
Buy 10 get one free



**Imported Aramid High Temperature Rope**  
6\*6 250m/roll  
8\*3 250m/roll  
8\*4 250m/roll  
10\*3 250m/roll  
12\*3 250m/roll



**Tempering Furnace Round Belt**  
Φ8min 100m/roll  
Φ10mm50m/roll  
Seamless please provide diameter & perimeter for quotation



Straight Shank Small Grinding Wheel  
D15\*95\*T8 D15\*95\*T10



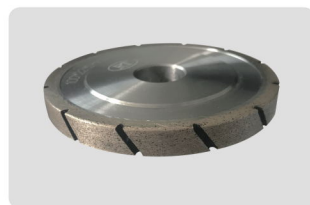
BD polishing wheel

**BD polishing wheels**  
 100\*22\*15mm  
 For 5mm and 6mm glass  
 100\*22\*20mm  
 For 8mm and 10mm glass  
 100\*22\*25mm  
 For 12mm glass  
 100\*22\*30mm  
 For 15mm and 19mm glass



Ogee diamond wheel

**Ogee diamond wheel**  
 100\*22\*6mm  
 80# 150# 240#  
 100\*22\*8mm  
 80# 150# 240#  
 100\*22\*10mm  
 80# 150# 240#  
 100\*22\*12mm  
 80# 150# 240#



Parallel circumferential wheel



Parallel circumferential wheel



Milling cutter

**Parallel circumferential wheel**  
 100\*22\*8mm 150#  
 100\*22\*10mm 150#  
 100\*22\*12mm 150#  
 XY 100\*22\*8mm 100#

**Milling cutter**  
 16mm\*4\*L75mm  
 18mm\*4\*L75mm  
 XY 14mm\*4\*L80mm  
 XY 20mm\*4\*L80mm  
 ZR 20mm\*4\*L75mm



Cork pad (with glue)

**Cork pad (with glue)**  
 1.5mm 14.2mm \*14.2mm \*18m/crt  
 2mm 17mm \*17mm \*15m/crt  
 3mm 17mm\*17mm\*10m/crt  
 4mm 17mm\*17mm\*10m/crt  
 5mm 17mm \*17mm\*7.225m/crt



Cork pad (with foam)

**Cork pad with foam (cork thickness+1mm foam)**  
 1.5mm (1.5mm cork +1mm foam) 14.2mm \*14.2mm \*16m/crt  
 2mm (2mm cork + 1mm foam) 17mm \*17mm \*10m/crt  
 3mm (3mm cork +1mm foam) 17mm\*17mm\*10m/crt  
 4mm (4mm cork +1mm foam) 17mm\*17mm \*7m/crt  
 5mm (5mm cork +1mm foam) 17mm\*17mm \*5.78m/crt



EVA pad

**EVA pad**  
 1.5mm: (1.5mm EVA+1mm foam) 14.2mm \*14.2mm \*16m/crt  
 2mm: (2mm EVA+1mm foam) 17mm \*17mm \*13m/crt  
 3mm: (3mm EVA+1mm foam) 17mm \*7mm \*10m/crt  
 4mm: (4mm EVA+1mm foam) 17mm \*17mm \*7.225m/crt  
 5mm: (5mm EVA+1mm foam) 17mm \*17mm \*5.78m/crt



**Corner repairing cotton**  
 bag Length: 65mm 50pcs/bag  
 Length: 40mm 100pcs/bag



Corner repairing cotton handle  
 40mm /65mm



Waterproof label (A4)  
 4\*11/4\*10/5\*13



Dry type coating removing wheel (standard)



Dry type coating removing wheel (Z)



Dry type coating removing wheel (BJ)



Dry type coating removing wheel (N)

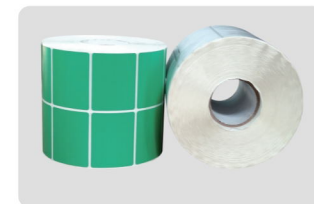


Dry type coating removing wheel (RN)



Coating removing wheel (dry&water type)

**Dry type (standard)**  
 Φ200\*76.2\*10mm  
 Φ200\*76.2\*12mm  
 Φ200\*76.2\*15mm  
**Dry type (Z)**  
 Φ200\*76.2\*10mm  
 Φ200\*76.2\*12mm  
 Φ200\*76.2\*15mm  
**Dry type (N/RN)**  
 Φ200\*76.2\*10mm  
 Φ200\*76.2\*12mm  
 Φ200\*76.2\*15mm  
**Dry type (BJ)**  
 Φ150\*76.2\*15 Φ150\*76.2\*10  
 Φ150\*76.2\*12 Φ200\*76.2\*10  
 Φ200\*76.2\*18 Φ200\*76.2\*20  
 Φ200\*76.2\*12 Φ200\*76.2\*15  
**Dry and water type**  
 Φ200\*76.2\*10 Φ200\*76.2\*12  
 Φ200\*76.2\*15



Waterproof label (roll)

**Waterproof label (roll)**  
 50\*30\*3000pcs/roll  
 Color: White  
 50\*30\*3000pcs/roll  
 Color: Pink and Green  
 50\*38\*3000pcs/roll  
 Color: White  
 50\*38\*3000pcs/roll  
 Color: Pink and Green  
**Glass protect film**  
 30cm  
 40cm  
 45cm  
 55cm  
 60cm  
 1m  
 1.2m  
 1.5m



Glass protect film



Hollow glass moving sucker



Hollow glass moving sucker  
 With Air TAC pneumatic components



Hollow glass moving sucker  
 With SMC pneumatic components



Connector



Steel fork

**Connector**  
 5.5(mm) 50000pcs/crt  
 8.5(mm) 30000pcs/crt  
 11.5(mm) 20000pcs/crt  
 14.5(mm) 15000pcs/crt  
 15.5(mm) 15000pcs/crt  
 17.5(mm) 15000pcs/crt  
**Steel fork**  
 8.5(mm) 5000pcs/crt  
 11.5(mm) 5000pcs/crt  
 14.5(mm) 5000pcs/crt  
 15.5(mm) 5000pcs/crt  
 26.5(mm) 5000pcs/crt



Glue making tool



Spare part for glue making tool



Glue Gun  
1/4 13mm



Glue Gun  
Domestic version 19\*16mm



Glue Gun  
Imported version 19\*16mm



Interface



Universal Joint



Triple Valves



U-shape Maxer



Maxer  
for Guanghuili Glue Machine



Glue Gun  
U-shape



Glue Gun  
Straight form



Mix Glue Stick  
Length is 240mm, dia is 12 13 block



Cleaning Glue Machine  
(for hollow glass)



Portable Inflator



Push-pull inflator



Four smart inflators



Eight smart inflators



Four groups of CNC inflators



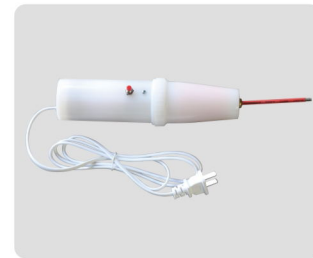
32 Group Inflator



Smart High-speed Inflator



Smart Inflator



Detector



Pneumatic Components  
5000 pieces/bag



Rubber Roller  
(for Washing Machine)  
Price according to the size



Brusher for Washing Machine  
price according to the size



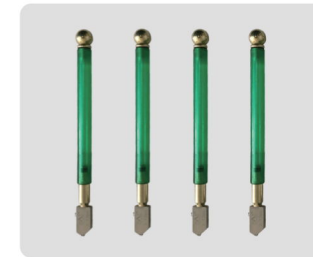
Aluminum Strip Folding Machine  
for 6A-15A aluminum strip



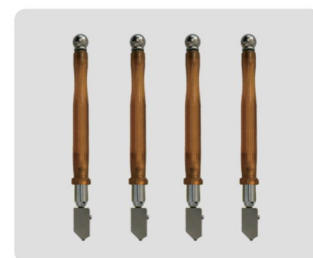
Flat Glass Plier  
8 inch



Glass Breaking Pliers  
1# (for glass size within 15mm)  
2# (for glass size within 25mm)



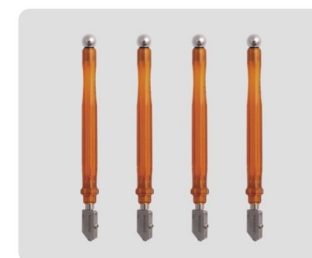
Glass Cutter  
3-12mm



609 Cutter  
3-12mm



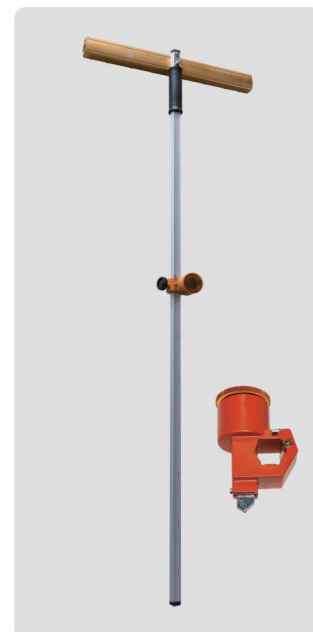
609 Cutter  
10-19mm



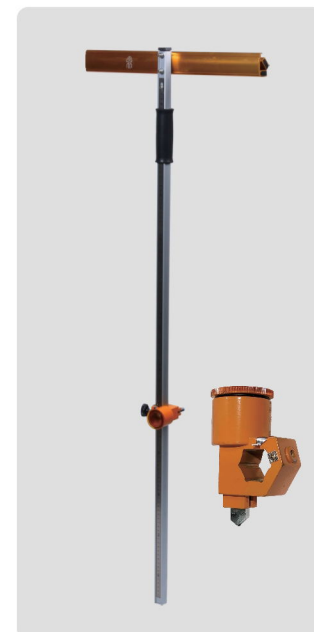
BEIDOU Cutter  
6-12mm



BEIDOU Cutter  
15-19mm



603 T Cutter



602 T Cutter



BEIDOU T Cutter

**603 T Cutter**  
600mm 900mm  
1.2m  
1.5m  
1.8m  
603 oilcan (with cutter head)

**602 T Cutter**  
600mm 900mm  
1.2m 1.5m 1.8m 2m  
603 oilcan (with cutter head)

**BEIDOU T Cutter**  
600mm 900mm  
1.2m  
1.5m  
1.8m  
2m  
S-20 oilcan(with cutter head)

Hollow Plate

Cutting Series



Cutter  
12mm special



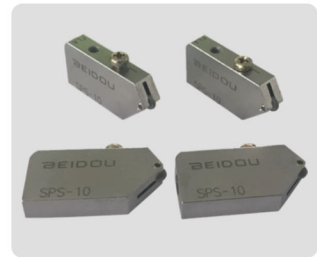
Glass Breaker  
for 12mm



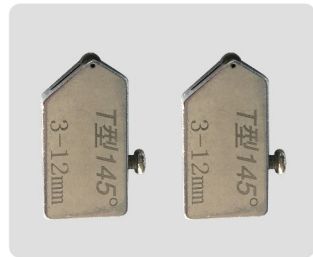
T Cutter Head  
625 M 6-12mm



T Cutter Head  
BEIDOU-10 6-12mm



T Cutter Head  
BEIDOUSPS-10 15-19mm



T Cutter Head 3-12mm  
(for 603 T Cutter)



T Cutter Head 6-15mm  
(for 602 T Cutter)



T Cutter Wheel



Circular Cutter  
634 10\*15(mm)Dia 2.5m 635 15\*15mm Dia 3m  
637 10\*10(mm) Dia 0.6m 637 10\*10mm Dia 1.2mm



Circular Cutter Suction Cup



Circular Cutter Head



Cutting Machine Cutter  
Bohle wheel with plastic rest



Cutting Machine Wheel  
Bohle Cutter Wheel Dia 4.2



Cutting Machine Wheel  
Cutting Wheel 4.0\*1.4\*1.1



Cutting Machine Cutter



Cutting Machine Cutter



Cutting Machine Cutter



Straight Shank Copper Sleeve



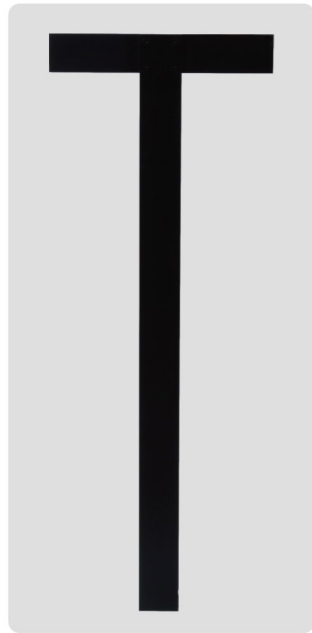
JINGLING Copper Sleeve



JINGLING Copper Sleeve  
without wheel



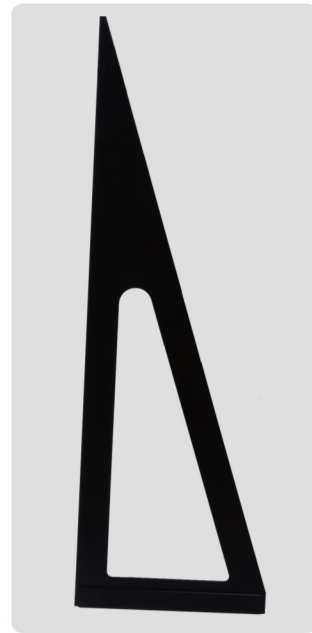
ZHANGYANG Copper Sleeve



Bakelite T ruler  
0.6m 0.8m 1m 1.2m



Bakelite L Ruler  
0.8m 1m 1.2m



Bakelite Triangle Ruler  
0.8m 1m 1.2m



Pen-type Cutter  
10 pcs/box



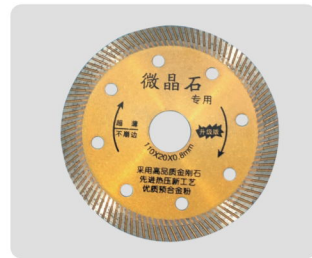
TAJIMA Steel Tap  
5m 3.5m 5.5m



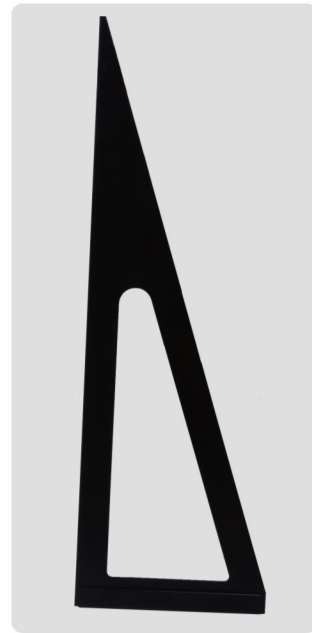
Electroplate Grinding Slice  
100\*16  
100# 120# 150# 180#



Electroplate Grinding Slice  
100\*16  
100# 120# 150# 180#



Microlite Cutting Slice  
100\*16



Sintering grinding slice  
80\*16\*8  
120# 150# 180#



Polishing Slice Wheel  
100\*16  
High quality 220#



Electroplate Cutter Slice  
100\*20\*1mm



Sintering Cutter Disc  
100\*20\*1mm



694 Bearing



Sintering Grinding Slice  
100\*16\*8  
120# 150# 180#



Polishing Slice Wheel  
100\*16  
Normal 220#

Cutting Series

Grinding & Polishing



Resin Grinding Slice  
80\*16  
120# 150# 180#



Woolen wheel for angle grinder  
φ100\*16(A)\*12(T)



Coating remove wheel  
for angle grinder  
φ100\*16(A)\*12(T)



Polishing



Diamond Abrasive pads  
85mm\*55mm\*120#



Diamond Abrasive pads  
120mm\*90mm\*800#



Wrist guard with thumb in hole  
Metallic botton  
Plastic botton



Wrist guard with wings  
Metallic botton  
Plastic botton



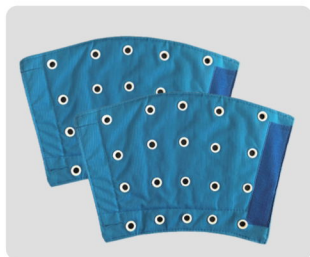
Wrist guard 1  
Upper width:28cm  
bottom width:36cm  
Length: 22cm



Cotton wrist guard(metallic button)  
Upper width:28cm  
bottom width: 36cm  
Length: 27cm



Light denim wrist guard  
Metallic botton  
Plastic botton



Water proof material wrist guard  
Metallic botton  
Plastic botton



Wrist guard denim material



Anti-cutting sleeves  
(grey & black)



Anti-cutting sleeves  
(grey & white)



5 grades anti-cutting sleeves



5 grades anti-cutting sleeves  
with rubber



Kevlar nylon wire



Arm protector  
Cotton material with brass buckles



5 grades anti-cutting gloves



Anti-cutting gloves  
#9 #10



Anti-cutting gloves



Vega wrinkle gloves



Corrugated gloves  
Material: Yarn,  
latex bag 12 pairs



Xingyu gloves



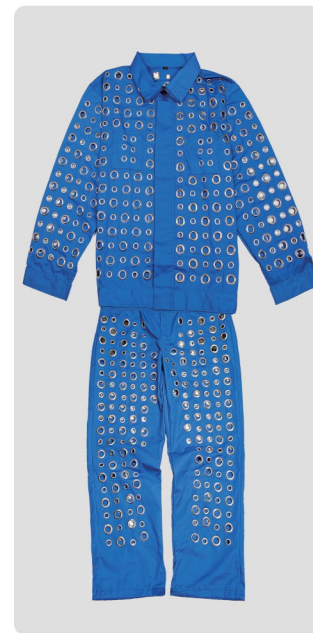
Xingyu anti-cutting gloves  
(5 grades)



Apron (small)  
Denim 50\*60cm



Apron (big)  
Denim 1.2m



Protection suit  
Metallic buckles



Protection suit  
Brass buckles; cotton lining  
M:165 L:170 XL:175 XXL:180 XXXL:185 XXXXL:190



4 grades anti-cutting suit  
Jacket



4级针织天蓝色防割护衣



4 grades anti-cutting suit  
Trousers



Safety shoes  
8802



Safety shoes  
8808



Safety shoes  
8866



Safety shoes  
8828

Labor Safety  
Protection Products

Labor Safety  
Protection Products



Uniform Spring & Autumn (A) Cotton



Uniform Spring & Autumn (B) Cotton



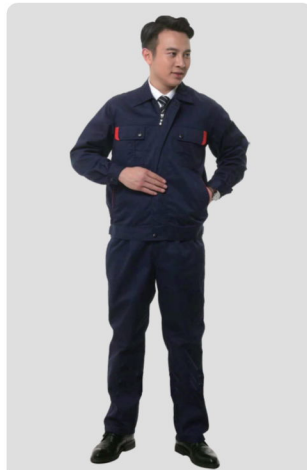
Uniform Spring & Autumn (C) Cotton



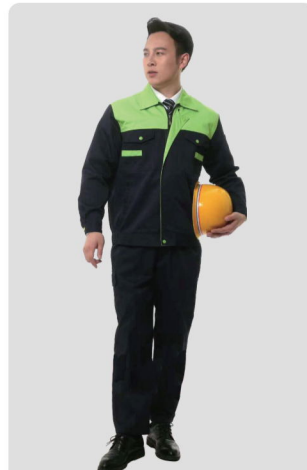
Uniform Spring & Autumn (D) Cotton



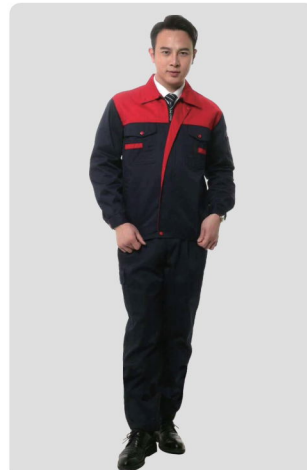
Uniform Autumn & Winter Cotton



Uniform Autumn & Winter Cotton



Uniform Autumn & Winter Cotton



Uniform Autumn & Winter Cotton



Round Diamond Wheel Sintering wheel Portable edging machine with wheels

**Sintering wheel**  
 φ80\*22(A)\*4mm 150#  
 φ80\*22(A)\*5mm 150#  
 φ80\*22(A)\*6mm 150#  
 φ80\*22(A)\*8mm 150#  
 φ80\*22(A)\*10mm 150#  
 φ80\*22(A)\*12mm 150#  
**Electroplating wheel**  
 φ65\*22(A)\*5mm 120#  
 φ65\*22(A)\*6mm 120#  
 φ65\*22(A)\*8mm 120#  
 φ65\*22(A)\*10mm 120#  
 φ65\*22(A)\*12mm 120#  
 φ65\*22(A)\*15mm 120#  
 φ65\*22(A)\*19mm 120#  
 φ65\*22(A)\*22mm 120#  
 φ65\*22(A)\*30mm 120#



Round Diamond Wheel Electroplating wheel Portable edging machine with wheels



BD Polishing Wheel

φ100\*22(A)\*15mm  
 5mm 6mm  
 φ100\*22(A)\*20mm  
 8mm 10mm  
 φ100\*22(A)\*25mm  
 12mm 14mm  
 φ100\*22(A)\*30mm  
 15mm19mm



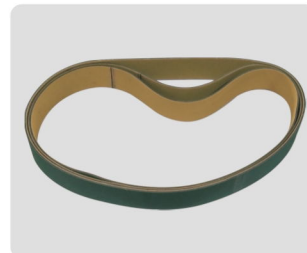
Bevel wheel φ65\*22(A)\*45 degree



Portable Edging Machine



Portable Edging Machine Part Rotor



Portable Edging Machine Part Belt



Portable Edging Machine Part Handle



Portable Edging Machine Part White Universal Wheel



Pneumatic Film Remover



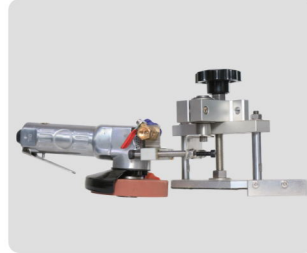
Pneumatic Film Remover Dependent Wheew 30\*31 (height)\*6(A) white



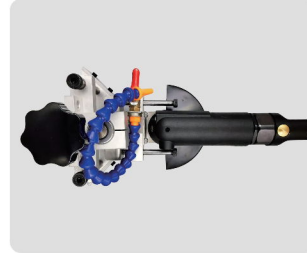
Pneumatic Film Remover Polishing Whee φ60\*8(A)\*12mm



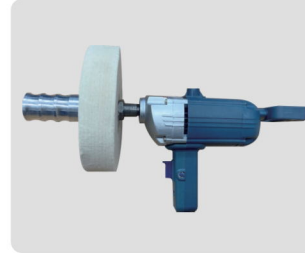
Pneumatic Film Remover Polishing Whee φ60\*8(A)\*15mm



Glass Chamfering Machine



High Power Pneumatic Film Remover TM-01



Portable Polishing Machine



Wool Wheel 150\*22\*40 Polishing machine wheel



Pneumatic Film TBM-880 Remover Glass Low-e Remover



Pneumatic Sander Polished glass corners



Manual Drilling Machine



Sweeper



LOW-E Film Detection Pen To detect low-e glass film



EPSON Dot Matrix Printer 730K



POSTEK C168/300C(300DPI) Printer



Automatic Inflatable Punching Machine

Simple Machinery

Simple Machinery



Washing Machine(2500mm)



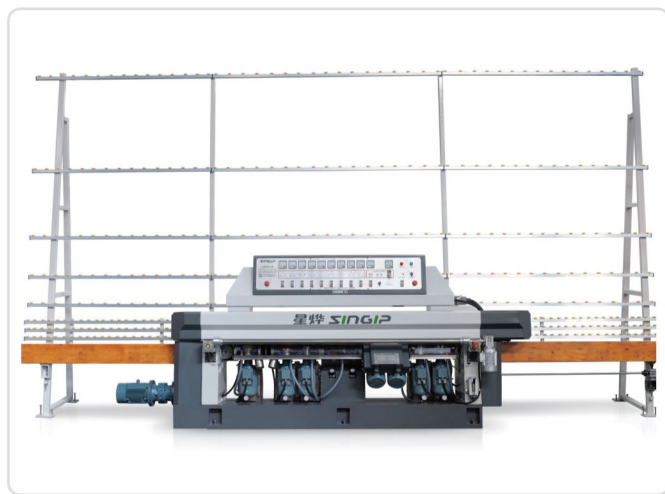
Shaped Machine



Washing Machine(1600mm)



High Speed Washing Machine (2500mm)



Edging Machine



Butyl Rubber Machine



Suction Cup  
35kgs dia 123mm  
thickness 7mm



Practical black  
single-claw sucker



Plastic single-claw sucker



Plastic single-claw sucker



6 inch pump suction cup  
Dia 150mm Loading capacity  
is 50kgs Suitable for auto glass  
and bending tempered glass



8 Inch Pump Suction Cup  
dia is 200mm loading capacity  
is 150kgs  
Suitable for sheet glass



Glass Moving Clamp  
Loading caacity is 100kgs



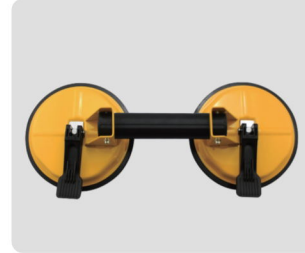
Suction Cup  
dia 123 loading capacity  
is 100kgs  
Thickness is 7mm



Suction Cup  
dia 123 thickness 7mm  
100kgs



Suction Cup  
dia 123 thickness 7mm  
120kgs



Suction Cup  
dia 140mm thickness 7mm  
130kgs



Suction Cupdia  
130mm thickness 7.5mm  
anale 90-270



Suction Cup for auto glass  
45kgs dia is 150mm



Plastic double claw suction  
cups orange



Standard double-clawed sucker



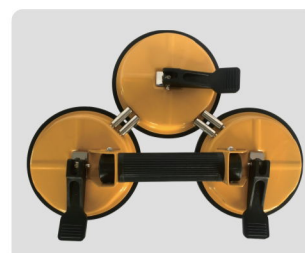
Suction Cup  
100kgs for sheet glass



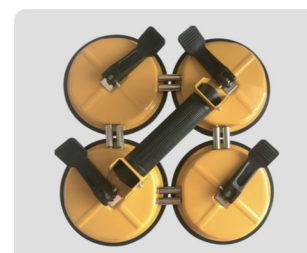
Suction Cup  
Vertical loading capacity 170kgs  
horizontal loading capacity 190kgs  
dia123mm thickness 7mm



Suction Cup  
vertical capacity is 135kgs  
horizontal capacity is 150kgs  
dia 123mm thickness 7mm



Suction Cup  
vertical capacity is 170kgs  
horizontal capacity is 200kgs  
dia 140mm thickness 8mm



Suction Cup  
loading capacity is 200kgs  
dia 140mm thickness 7mm

Simple Machinery

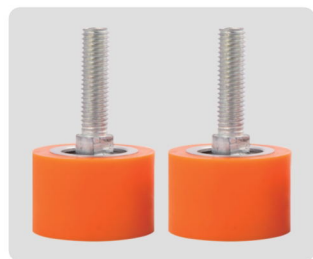
Manual Suction Cup Lifter Series



Depended Wheel (with screw)  
φ50\*25\*M10\*25



Depended Wheel  
φ40\*70\*M10\*20



Depended Wheel  
φ35\*25\*M10\*20



Depended Wheel  
φ35\*27\*M8\*20



Depended Wheel  
φ100x30



Depended Wheel  
φ120x25



Depended Wheel  
φ85x25



Depended Wheel  
φ120x25/120x30



Depended Wheel



Depended Wheel



Depended Wheel  
φ5\*M10



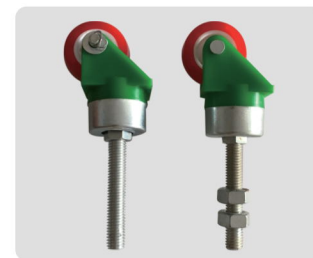
Depended Wheel  
φM10x40



Universal Wheel  
38mm M10\*60mm



Universal Wheel  
φ30xM14



Universal Wheel  
φ38xM10



Waterproof Universal Wheel  
φ38xM8



Depended Wheel



Nylon Depended Wheel  
M8\*30



Roller



Riding Wheel



Universal Wheel  
φ30xM14



Universal Wheel  
φ25\*M8\*100



Universal Wheel  
(for tempered machine)  
φ25\*M8\*100mm



Teflon Universal Wheel  
φ25\*M14



PU Depended Wheel  
φ60\*70\*20



Depended Wheel  
(for loading table)  
φ80\*25



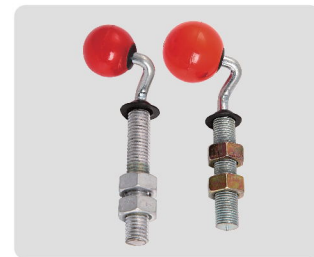
TENENG Roller  
φ70\*60\*50



Depended Wheel  
φ125\*25



Teflon Wheel  
φ25\*M8



Riding Ball  
φ30\*M14\*70 (red)



Riding Ball  
φ50\*M14



Riding Ball  
φ30\*M10



Depended Wheel  
φ126\*30



Depended Wheel  
φ180\*30



Depended Wheel  
φ85\*25



Depended Wheel  
φ100x25



Polyurethane Wheels  
For O2 edging machine universal  
wheel diameter 38mm



Riding Wheel  
φ30



Depended Wheel



Depended Wheel  
( for sealing glue line)



Pressure Wheel  
φ60,screw10red



Pressure Wheel  
φM10x65



Sidewall Wheel



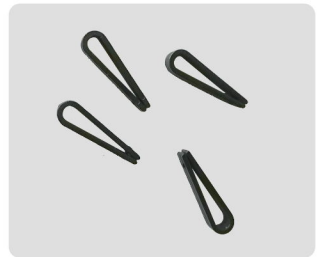
Depended Wheel  
(forhollow glass line)  
φ45\*H57



Woodworking Clamp  
1 inch(Max open 2.1cm)



Woodworking Clamp  
2 inch(Max open 4.5cm)



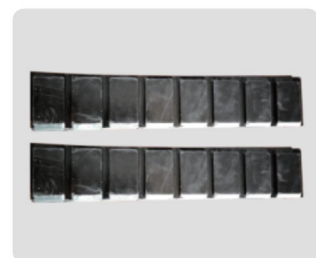
U Shape Clamp  
for 4-6mm glass(15,000 pc/bag)



U Shape Clamp  
for 8-12mm glass(8,000 pc/bag)



Felt Table Cloth  
3.5mm thick\*2.1m width



Partition Clip



Straight Edge Machine Front Splint



Straight Edge Machine  
Rear Splint



Beveling Machine Front Splint



Beveling Machine Rear Splint



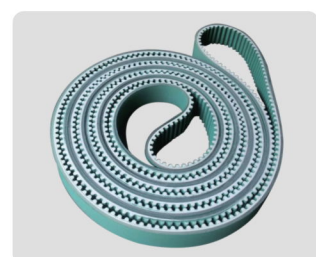
Chain  
120 section



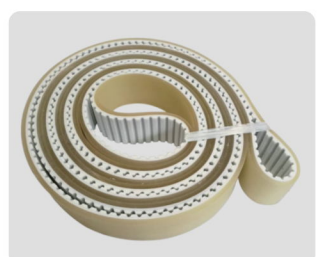
Water Pipe  
1/4 small size M12  
3/8 medium size M16  
1/2 large size M20



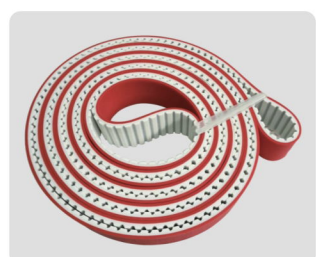
Glass Corner Protector  
5mm/6mm/8mm  
10mm  
12mm



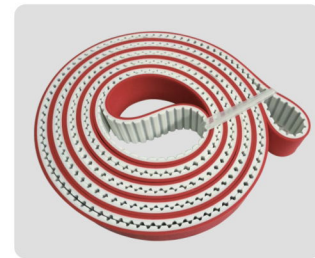
Timing Belt  
30AT20-5820+3PU  
doublesided cloth



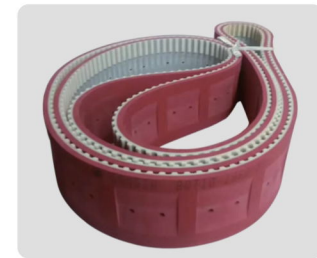
Timing Belt  
Connection  
belt 49.5-AT10-6940+5RPU  
Seamless  
belt 49.5-AT10-6940+5RPU



Timing Belt  
Connection belt  
49.5-AT20-8040+2APL  
Seamless belt  
49.5-AT20-8040+2APL



Timing Belt  
Connection belt  
49.5-AT20-8040+3T  
Seamless belt 49.5-AT20-8040+3T



Timing Belt  
Suction belt 80-AT20-2030+4T red+31  
square double hole 35 slot width



Timing Belt  
Opening belt 38-H



Timing Belt  
Connection belt 38.1-H-4191+2PU  
Seamless belt 33-H-4318+2PU



Suction Cup Protection Cover  
φ120 φ150 φ210 φ250 φ300



Silicone Pad  
φ135\*3mm thickness



Suction Cup  
φ150



Suction Cup Assembly  
φ120



Suction Cup  
φ90x190



Suction Cup  
φ90x190



Suction Cup



Rubber Sucker  
φ210



φ250mm Silicone  
Without aluminum base



φ250mm Rubber  
Without aluminum base



手提吸盘橡胶垫  
123mm胶皮总成(实用型亮光单爪)



Rubber Sucker  
φ90



Silicone Suction Cup  
φ300



Silicone Suction Cup



Waterproof Case  
φ100 φ130



Suction Cup  
φ90

Accessories Series

Accessories Series