



中文网站

### 佛山市钢威玻璃技术有限公司

地址: 广东省佛山市顺德区伦教工业大道  
电话: 0757-27750128 传真: 0757-27880225  
邮箱: 2289502080@qq.com 邮编: 528308 www.cntechwin.com



English Website

### FOSHAN TECHWIN GLASS TECHNOLOGY CO., LTD.

Address: Lunjiao Industrial Road, Lunjiao Town, Shunde District, Foshan City, Guangdong  
TEL: 0086-757-27750128 FAX: 0086-757-27880225  
E-mail: franky@fstechwin.com P.C.: 528308  
www.fstechwin.com

本公司保留产品设计与规格权利, 届时恕不另行通知, 所有资料经过仔细核对, 以求准确, 如有印刷错误产生失误, 本公司不承担因此产生的后果, 印刷过程中可能令资料和实物有轻微差别, 请以实物为准, 本公司保留最终解释权。

Our company has the right to reserve the product's design and size, please forgive that we won't inform you again. All the information has been checked carefully to ensure it is correct one. We won't bear responsibility if there is any miss because of printing errors. The printing materials may have small difference compared with the real goods, please take the real goods as final, we have the final right to interpret.

中文官网  
[www.cntechwin.com](http://www.cntechwin.com)

English Web  
[www.fstechwin.com](http://www.fstechwin.com)



专业研发生产  
玻璃清洗设备

# 凝聚精工 创新卓越

PROFESSIONAL GLASS WASHING  
MACHINES MANUFACTURER  
**Skillful In Quality And Innovation Of Excellence**

FOSHAN TECHWIN GLASS TECHNOLOGY CO., LTD.

## 专注玻璃清洗的开发与研发

Focus On Glass washing machine design  
Research And Development

**11** 年专注

赢领玻璃清洗设备研发生产  
11 years only focusing on design  
and develop highquality glass  
washing machines

**30** 个国家

设备出口俄罗斯、荷兰等  
Export to more than 30 countries,  
main market is Europe and North  
America

**700** 余套

年产成套玻璃清洁加工设备  
Produce more than 700 sets of glass  
washing machines every year

## 公司简介 BRAND OVERVIEW

▶ FOSHAN TECHWIN GLASS TECHNOLOGY CO.,LTD (hereinafter referred to as TECHWIN), is a manufacturer who focus on the design and producing for the glass washing machines. Our glass washing machines be use in washing and drying of building glass, solar glass, appliance glass, automotive glass, shower glass, Low-E glass and other type of glass. We manufacture products not only for standard models with bulk quantity, but also we provide project solution and customized design, OEM and ODM are available.



▶ Our engineers who are with more than 20 years experience in glass processing machines design, with the help of the advanced processing equipment ( Laser cuttings, CNC lathers and bending, rolling, dynamic balance) and experienced employees, they ensure the glass washing machines are with high quality, and the machines be tested by professional instrument so their technical parameters are trustworthy and reliable. More important is TECHWIN has its own processing workshops for the machine parts.

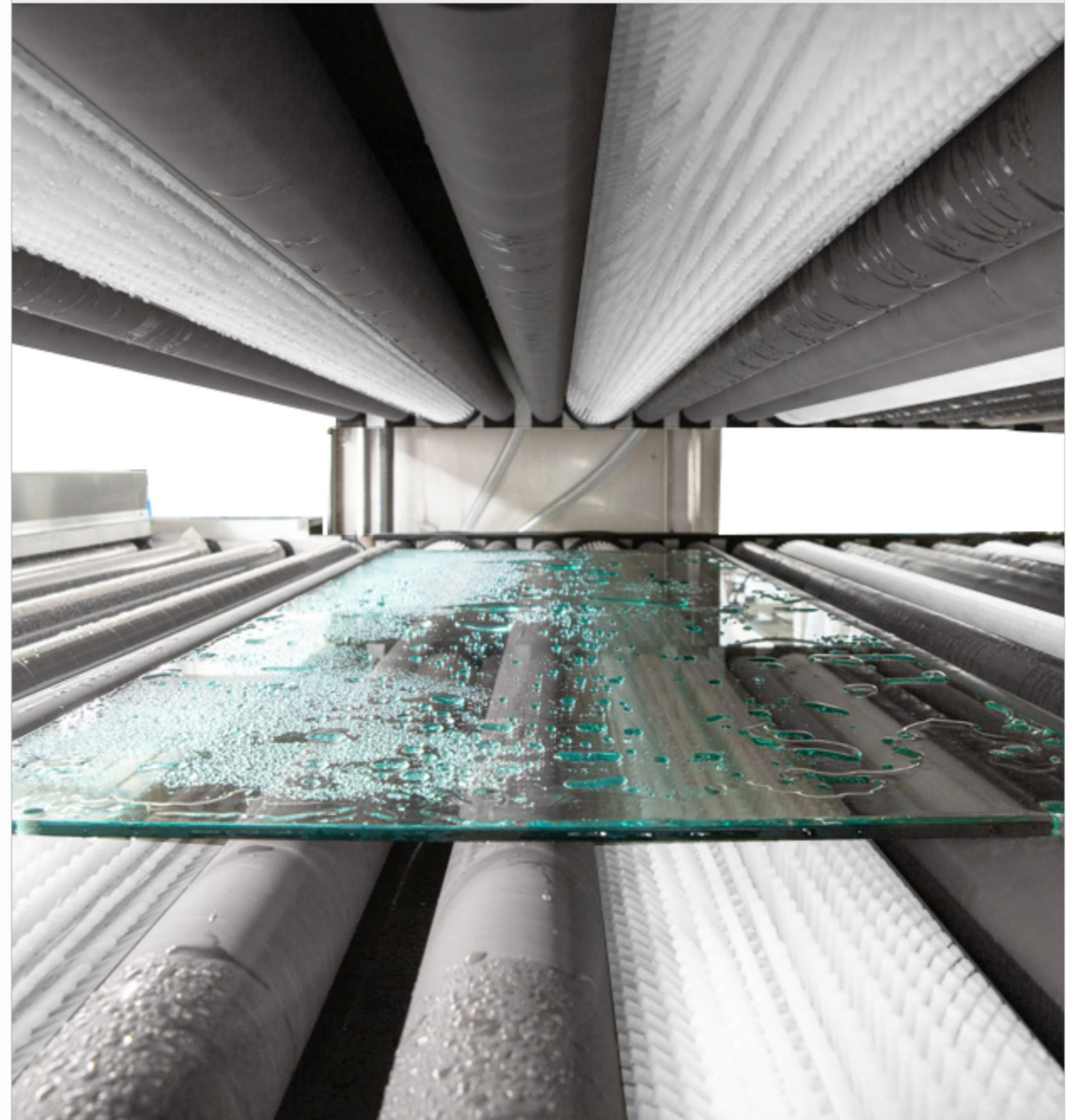


▶ Currently, our products have been exported to more than 30 countries, we had win trust and reputation from our clients. We FOSHAN TECHWIN GLASS TECHNOLOGY CO.,LTD will be your honest and reliable partner.

▶ 佛山市钢威玻璃技术有限公司成立于2010年,是集玻璃深加工机械设备研发、设计、生产、销售和技术服务于一体的企业。公司地处经济发达,交通便利,被誉为中国玻璃机械重镇的广东省佛山市顺德区伦教镇。自创立而来,始终坚持以人才为本、诚信立业的经营原则,荟萃业界精英,将国内外先进的信息技术与国内企业的具体实际相结合,为企业供给全方位的解决方案。

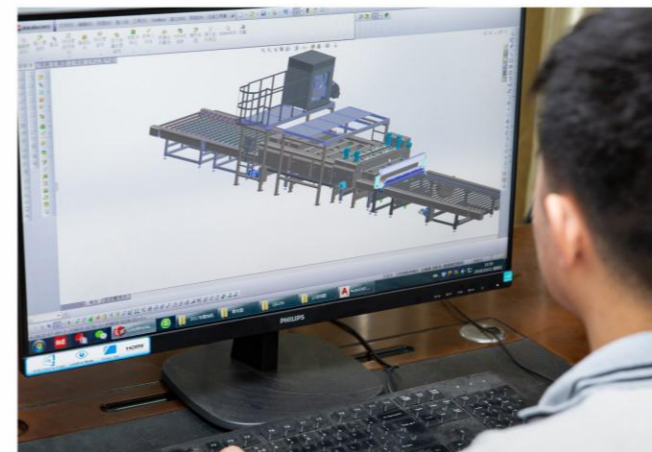
▶ 玻璃清洗干燥机是钢威的主打产品,效力于满足客户需求,缔造卓越产品。公司专业的技术团队,为钢威玻璃保驾护航。每一台钢威的设备出厂前都通过严格的质量检测,以保证其质量和品控的完美呈现。

▶ 目前,我们的产品已出口到30多个国家,并赢得了客户的信任与肯定。我们佛山钢威玻璃技术有限公司将是您真诚可靠的合作伙伴。



# 企业文化 CORPORATE CULTURE OF TECHWIN

SKILLFUL IN QUALITY INNOVATION OF EXCELLENCE  
凝聚精工, 创新卓越



## Appliance Glass Washing Machine

家电玻璃清洗机系列



### 参数表

Parameter table

模型	MODEL	TWQX-1000G	TWQX-1200G	TWQX-1500G
最大加工宽度	Max. Glass Width (mm)	1000	1200	1500
最小加工尺寸	Min. Glass Size (mm)	300*200	300*200	300*200
玻璃厚度	Glass Thickness (mm)	3-25	3-25	3-25
速度	Working Speed (m/min)	1~12	1~12	1~12
毛刷	Brush (Pairs)	3	3	3
水箱	Water Tank (Unit)	4	4	4
风刀	Air Knives (Pairs)	3	3	3

## High Speed Architectural Glass Washing Machine

高速建筑玻璃清洗机系列



### 参数表

Parameter table

型号	MODEL	TWQX-1700G-3	TWQX-2000G-3	TWQX-2500G-3	TWQX-3000G-3
最大加工宽度	Max. Glass Width (mm)	1700	2000	2500	3000
最小加工尺寸	Min. Glass Size (mm)	400*400	400*400	400*400	400*400
玻璃厚度	Glass Thickness (mm)	3-25	3~25	3~25	3~25
速度	Working Speed (m/min)	1~16	1~16	1~16	1~16
毛刷	Brush (Pairs)	3	3	3	3
水箱	Water Tank (Unit)	4	4	4	4
风刀	Air Knives (Pairs)	3	3	3	3

# HORIZONTAL GLASS WASHING DRYING MACHINE (STANDARD MODELS)

## 卧式玻璃清洗干燥机(标准型)

### 常规机型描述

- 采用铝合金组装结构,拥有简洁、完美的外观设计。
- 预清洗系统配置有高压水喷射玻璃表面,提高清洗效果。
- 电动控制清洗段上架和风干段上架整体升降,维修和检查方便。数字显示清洗玻璃厚度,可以精确调节和观察。
- 采用三级清洗结构,三对毛刷辊配置,可清洗普通镀膜玻璃,Low-E玻璃和阳光镀膜玻璃。
- 传动采用齿轮传动,平稳可靠。输送利用变频调速,数字显示,控制方便。更有利于连接双边磨生产线,彩釉线,中空玻璃生产线,安全玻璃生产线等。
- 采用先进技术的多级出风刀口,节能高效。

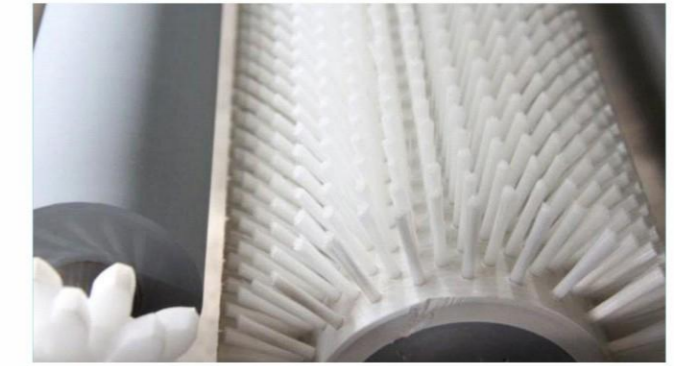
### STANDARD MODEL DESCRIPTION

- Working width from 1700 to 3000mm.
- Strong welded construction.
- Beams support rollers, collection tank and parts at contact with water are made of stainless steel.
- Stainless steel tray removal for glass scrap recovery.
- Rubberized vulcanized and rectified conveyor rollers.
- Upper prewashing.
- Washing by 3 cylindrical brushes [2+1].
- Drying by 1 blower.
- Sound pressure level within the standards.
- Inverter for conveyor rollers rotation drive with digital display for speed.
- Electrical equipment and control panel in accordance to current standards.



Tooth belts are used for long service life. The belt can be adjusted by gear. Water guard plates under the brushes to divide the tank to avoid water contamination.

采用齿皮带使使用寿命更长,维护简单,保养方便



Three pairs of brushes with stainless steel axes. The diameter of brush is 170mm which have long lifetime and avoid vibration. There is separation for each brush to avoid dirty water go across.

采用植毛毛刷,毛刷直径达170mm,毛丝材料是耐高温、耐磨进口尼龙丝。



Three sections for water proof: 1. Rubber bar; 2. Rubber pad; 3. Black sleeves. High quality nylon are adopted for steady and synchronous transmission. The spray nozzles can be taken down easily for daily cleaning.

采用胶条与挡板作防水处理;传送辊均采用全硫化胶辊,经久耐用。



Transparent cover on the top of the machine to inspect inside of the machine. Easy for daily cleaning and open to check. The spray nozzles can be taken down easily for daily cleaning.

透明玻璃盖方便检查清洗机内部运作情况,同时也方便日常维护清洗

## High Speed Solar Glass Washing Machine 高速光伏玻璃清洗机系列



### 常规机型描述

- 此机专为光伏玻璃而设计，最大加工玻璃宽度为1380MM及1500MM。
- 最小加工尺寸为400\*600mm，加工厚度为1.6-6mm。
- 玻璃输送速度最高可达35米/分钟。
- 多级预喷淋对玻璃进行喷淋冲洗，喷淋水箱均为独立水泵，快捷插头，方便清理维护。
- 喷淋后设计有一条隔水风刀，保证预喷淋的水隔离，不进入清洗段。
- 本机设计共有8对毛刷，完美清洗玻璃表面，毛刷轴头为优质不锈钢。
- 风干段共设计有10对风刀，保证在高速传送的过程中也能完全吹干玻璃。
- 风干段设计合理，风机箱架在风箱架上，不占用场地。箱体上下部均设有消音材料，噪音小，可改善工作环境；风箱架上设有维修平台和防护栏。

### NORMAL MODEL DESCRIPTION

- Max. Processing size is 1380mm and 1500mm.
- Processing thickness from 1.6mm to 6mm.
- Max. Speed of the washing machine reaches 35m/min.
- There are several sets of pre washing, each set of pre washing has individual tank and pump to provide water.
- There is air knife set of pre washing to make sure the water won't enter washing section.
- Eight pairs of brushes, brush diameter is 150mm and shaft ends of the brushes are in stainless steel.
- Each tank is with separate pumps to provide water. Quick connect for pump and tank.
- Ten pairs of air knives, five are straight and five are angled.
- Blower set on the blower frame, low noise of the blower and air knives.
- Main transmission is by inverter and thickness adjusted by electrical ruler.



## HIGH SPEED DOUBLE BLOWER WASHING MACHINE

高速双风机清洗机系列



### 参数表

Parameter table

模型	MODEL	TWQX-2000E高速机	TWQX-2500E高速机	TWQX-3000E高速机
最大加工宽度	Max. Glass Width (mm)	2000	2500	3000
最小加工尺寸	Min. Glass Size (mm)	400*400	400*400	400*400
玻璃厚度	Glass Thickness (mm)	3~25	3~25	3~25
速度	Working Speed (m/min)	1~20	1~20	1~20
毛刷	Brush (Pairs)	4	4	4
水箱	Water Tank (Unit)	4	4	4
风刀	Air Knives (Pairs)	4	4	4



高压喷水  
High pressure Water spray



模块化结构  
Modular construction



电机控制升降  
Motor control lifting



多级出风刀口  
Multi-stage outlet blade

# HIGH SPEED DOUBLE BLOWER WASHING MACHINE

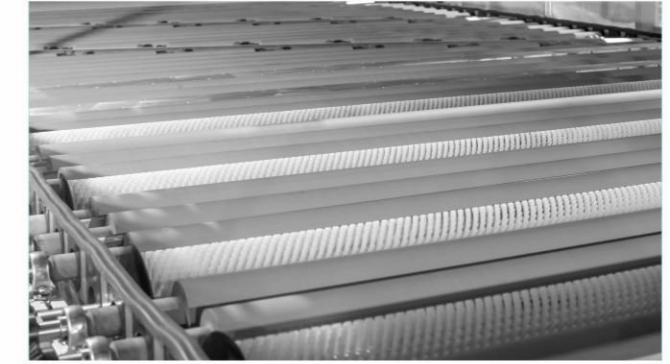
## 高速双风机清洗机系列

### 常规机型描述

- 采用铝合金组装结构,拥有简洁、完美的外观设计。
- 所有接水接触的钣金均采用优质不锈钢。
- 采用多对毛刷辊配置,最高速度能达20米/分钟。
- 传动采用齿轮传动,平稳可靠。输送利用变频调速,数字显示,控制方便,更有利于连接生产线。
- 配有多对风刀及多个风机,采用先进技术的风干技术,能在高速运行下让玻璃彻底干燥。
- 电动控制清洗段上架和风干段上架整体升降,维修和检查方便。

### NORMAL MODEL DESCRIPTION

- Machine features for high speed washer.
- Modular sections for easy maintenance and installation.
- Aluminium machine frame and stainless steel construction for water application parts.
- With multi pairs of brushes to clean glass in super high speed.
- Soft brush for coating glass is available.
- Straight and angled air knives are used to eliminate water on surface and edges.
- Motorized glass thickness adjustment.
- Integration into production line.
- Low noise design.
- Electrical equipment and control panel in accordance to current standards.



The tanks placed at the side of the machine so water status can be inspected.  
Separate water tanks with water pumps.  
Economical water circulation systems, valves are set on top of the tanks for auto water supplementation.

采用名牌专业水泵,增加水压力,供水、清洗效果更理想。

Three pairs of air knives to dry the glass perfectly even in high speed. Motorized up and down in washing and drying part, can be elevated max. height 360mm. The spray nozzles can be taken down easily for dail cleaning.

采用国外先进的风刀技术,多级风干技术结构,不锈钢和铝合金制造,有效提高风干效率。



Two blowers in blower frame that with platform and rails. The sound absorbing material is tightly attached to the inside of the cabinet. The spray nozzles can be taken down easily for daily cleaning.

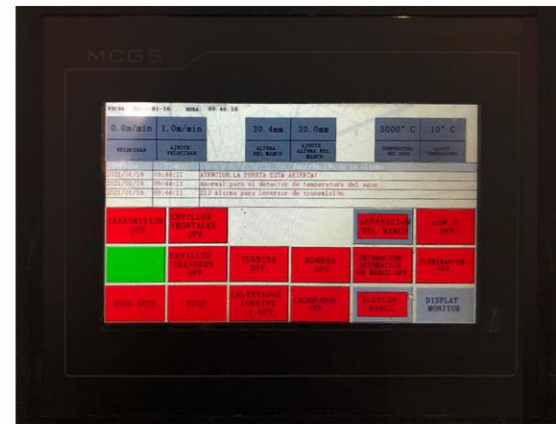
风机箱加有隔音棉,将整体噪声控制得非常好,给员工提供一下舒适的工作环境。

Top quality electrical parts from famous brand like Schneider and Siemens to ensure the long service life.

所有电器部件来自于世界或国产名牌,使用寿命长,售后故障低。

# Vertical Glass Washing Machines

立式清洗机系列



## 参数表

Parameter table

型号 MODEL	TWLQX-1600	TWLQX-2000	TWLQX-2500	TWLQX-3000
最大加工高度 Max. Glass Height (mm)	1600	2000	2500	3000
最小加工尺寸 Min. Glass Size (mm)	400*400	400*400	400*400	400*400
玻璃厚度 Glass Thickness (mm)	3~19	3~19	3~19	3~19
毛刷数量/对 Brush (pair)	3	3	3	3
毛刷直径 Brush Diameter (mm)	170	170	170	170
速度 Speed (m/min)	1~9	1~9	1~9	1~9
水箱数量 Tank quantity/个	2	2	2	2
风刀数量/对 Air knives quantity(pair)	2	2	2	2
水加热功率 Water Heating Power (Kw)	12	12	12	12
总功率 Total Power (Kw)	28	32	39	43



单毛刷电机  
Single brush motor



立式结构外观  
Vertical structure appearance



两对斜风刀  
Two pairs of oblique blades



传送速度可调  
transmission speed is adjustable

# VERTICAL GLASS WASHING MACHINES

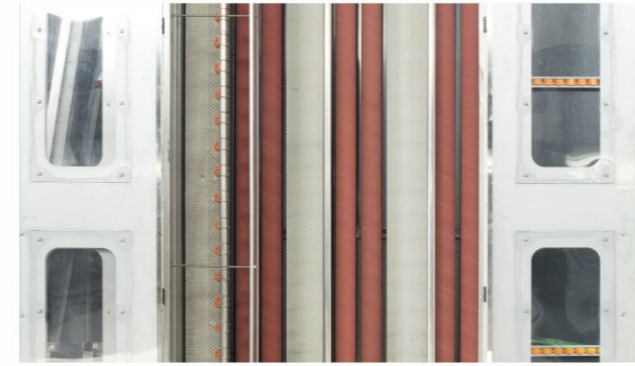
## 立式清洗机系列

### 常规机型描述

- 采用立式结构, 拥有简洁、完美的外观设计。
- 主传送采用伞齿轮、链轮传送, 传送平稳可靠, 传送速度可调节。
- 毛刷数量共为三对, 第一、二条硬毛刷两端装有气缸, 清洗镀膜玻璃时可升起。
- 第三条软毛刷用于清洗Low-E玻璃。每一条毛刷由单独的毛刷电机控制。
- 清洗及干燥段能整体开合达200MM, 为维护保养带来极大的便利。
- 两对斜风刀能有效风干玻璃表面及尾部的水份。
- 适用于建筑, 中空, 装饰等产业玻璃。

### DESCRIPTION OF VERTICAL GLASS WASHING MACHINE

- Strong welded construction with high quality coating paint.
- All stainless steel components and tanks for all water applications.
- 80mm rubberized vulcanized and rectified conveyor rollers.
- Inverter for speed control.
- Washing and drying part can be opened for easy maintenance, max. to 200mm.
- Three pairs of brushes with soft brush for Low-E glass.
- Each brush is driven by individual motor.
- Two tanks placed behind the machine with heating element.
- Two pairs of angled air knives.
- Low noise design, blower placed on a platform behind the unloading zone.



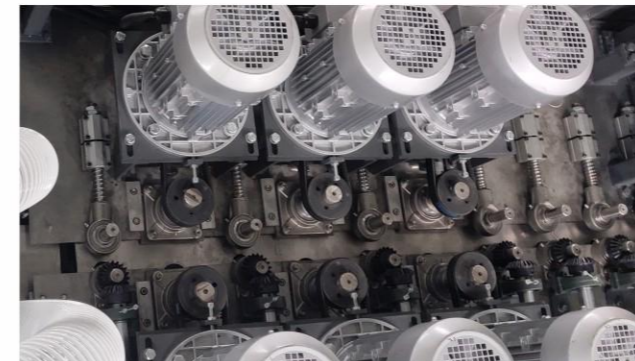
Two rollers between brushes to stabilize the small size glass.  
Brush diameter is 170mm, for perfect cleaning.

采用植毛毛刷, 毛刷直径达170mm, 毛丝材料是耐高温、耐磨进口尼龙丝。  
毛刷间配有2对胶辊, 起到压紧及隔水作用。



Big supporting wheels for heavy duty jobs.  
Aluminum wheel seats.  
The spray nozzles can be taken down easily for daily cleaning.

采用大号支撑轮便于承重大板玻璃。



Every brush is driven by individual motor to make sure cleaning power is enough.

每一条毛刷由单独电机驱动, 以便证完美的清洁效果, 同时也减少售后故障。

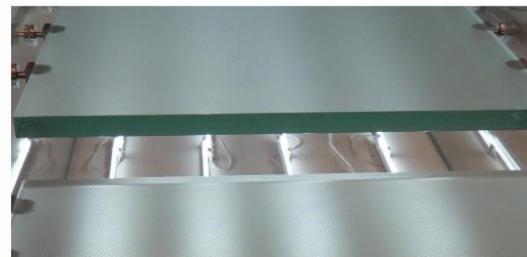


Washing and drying zone can open as a unit, max. to 200mm for easy maintenance.

清洗和干燥段能整体开合, 给日常保养带来极大的便利。

## Disc Brush Glass Washing Machine

刷盘清洗机系列



### 参数表

Parameter table

型号	MODEL	TWPQX-1700	WPQX-2000	TWPQX-2500
最大加工宽度	Max. Glass Width (mm)	1700	2000	2500
最小加工尺寸	Min. Glass Size (mm)	400*400	400*400	400*400
玻璃厚度	Glass Thickness (mm)	3-25	3-25	3-25
加工速度	Working Speed (m/min)	1-12	1-12	1-12
刷盘数量(组)	Disc brush (bridges)	2	2	2
辊刷数量(对)	Brush (Pairs)	4	4	4
水箱数量	Water Tank (Unit)	6	6	6
风刀/对	Air Knives (Pairs)	3	3	3



高压喷水  
High pressure Water spray



模块化结构  
Modular construction



电机控制升降  
Motor control lifting



多级出风刀口  
Multi-stage outlet blade

# DISC BRUSH GLASS WASHING MACHINE

## 刷盘清洗机系列

### 常规机型描述

- 采用铝合金组装结构,拥有简洁、完美的外观设计。
- 每一组盘刷由独立电机驱动,盘刷垂直玻璃输送方向。
- 模块化结构,方便安装与保养。
- 盘刷及清洗风干段带有电机控制的升降,方便维护和检查,配有高强度螺杆。
- 设备配有盘刷及辊刷,相互作用使清洗效果达到完美。
- 采用先进的多级出风刀口,预喷淋后及盘刷段后带隔水刀,辊刷后带有风干风刀。
- 此款清洗机适用于镀膜生产线、数码印刷生产线等高要求的玻璃加工生产线。

### Features for disc brush washer

- Modular production for easy installation and maintenance.
- With different bridges of disc brushes, each bridge driven by individual motors.
- Disc brushes used for polishing to make perfect cleaning.
- Air knives used after disc brushes zone.
- Cylindrical brushes equipped to wash the glass with clear water.
- The tanks with valves for auto water supply.
- Straight and angled air knives to dry glass perfectly.
- It can be used before coating, digital printing and other processing lines with high requirements.



Disc brushes cross distributed.

盘刷交叉分布,能有效清洗玻璃。



Air knife set after the disc brush zone to reduce the polishing power entering next washing zone.

在盘刷区后设有隔水风刀。



The tanks placed at the side of the machine so you can easily check if the water is clean or not. Separate water tanks with water pumps.

水箱放置于机器侧面方便检查水的干净程度,便于换水。

# BASIC AIR KNIVES GLASS WASHING MACHINE

小型清洗机系列

## 常规机型描述

- 本机采用水平卧式结构, 适用于平板玻璃的清洗和风干。
- 主要由进料段, 清洗段, 风干段和出料段组成。
- 采用四对毛刷清洗, 效果更好。
- 采用变频调速, 性能稳定。
- 采用先进的多级出风刀口, 节能、高效。
- 适用于丝印, 彩釉, 中空等各种高档玻璃的清洗。

## BX Series Description

- Rubberized vulcanized and rectified conveyor rollers.
- Gears and chains are adopted for steady and synchronous transmission.
- High pressure spraying systems for pre-washing.
- Four pairs of brushes.
- Three pairs of stainless steel air knives.
- Two separate stainless steel water tanks with circulated system.
- High speed, can work with edging machine or printing machine.
- Heater for blower and water tank.



高压水喷射  
High pressure water injection



多级出风刀口  
Multi-stage outlet blade



风刀结构  
Air knives drying



传送速度可调  
transmission speed is adjustable

## Small Glass Washing Machines

小型清洗机系列



## 参数表

Parameter table

型号	MODEL	TWQX-1200BX	TWQX-1600BX	TWQX-2000BX
最大加工宽度	Max. Glass Width (mm)	1200	1600	2000
最小加工尺寸	Min. Glass Size (mm)	280*280	280*280	280*280
玻璃厚度	Glass Thickness (mm)	3~12	3~12	3~12
毛刷数量/对	Brush (pair)	4	4	4
水箱数量/个	Tank quantity	2	2	2
风刀数量/对	Air knives quantity(pair)	3	3	3
速度	Speed (m/min)	1~10	1~10	1~10
总功率	Total Power (Kw)	23	28	32

# GLASS WASHER WITH SPONGE ROLLS

## 海绵辊清洗机系列

### 常规机型描述

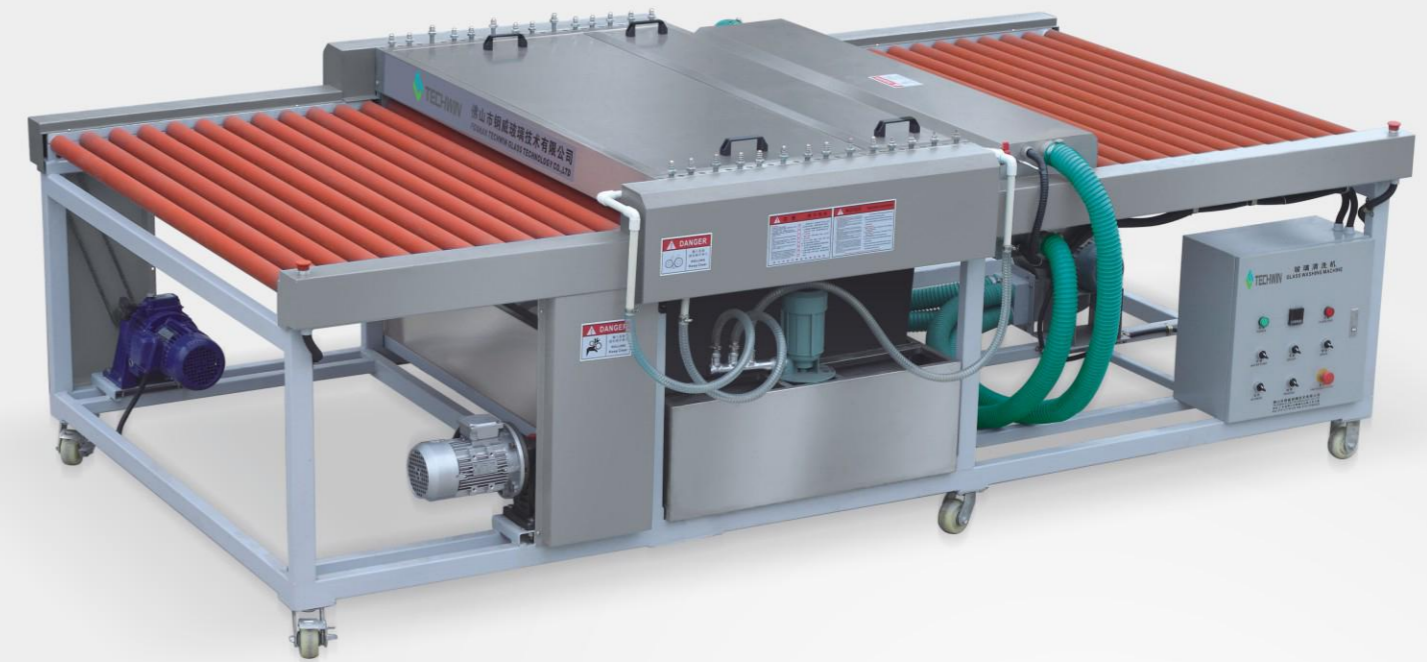
- 采用水平卧式结构,适用于平板玻璃的清洗和风干。
- 主要由进料段,清洗段,风干段和出料段组成。
- 采用四对毛刷清洗,效果更好。
- 四对海绵辊吸水后,再由热风干燥,清洗效果好。
- 采用机械无极变速调节,性能稳定,可靠耐用。
- 可清洗各种普通玻璃。

### A series Description

- Strong welded construction with stainless steel cover.
- Emergency buttons on loading and unloading tables.
- Rubberized vulcanized and rectified conveyor rollers.
- Washing by four pairs of brushes.
- Four pairs of sponge rollers and a small blower in drying section.
- A blower used after sponge rolls to make hot air evenly.
- Water-cycling system with high quality stainless steel water tanks for easy cleaning.
- Universal wheels are equipped for convenient movement.

# Glass Washer With Sponge Rolls

海绵辊清洗机系列



### 参数表

Parameter table

型号 MODEL	TWQX-800A	TWQX-1200A	TWQX-1600A	TWQX-2200A
最大加工宽度 Max. Glass Width (mm)	800	1200	1600	2200
最小加工尺寸 Min. Glass Size (mm)	50*50	180*180	180*180	300*400
玻璃厚度 Glass Thickness (mm)	3~12	3~12	3~12	3~12
毛刷数量/对 Brush (pair)	4	4	4	4
水箱数量/个 Tank quantity	1	1	1	1
海绵辊数量/对 Sponge roll quantity(pair)	4	4	4	4
速度 Speed (m/min)	1~6	1~6	1~6	1~6
总功率 Total Power (Kw)	12	13	15	20